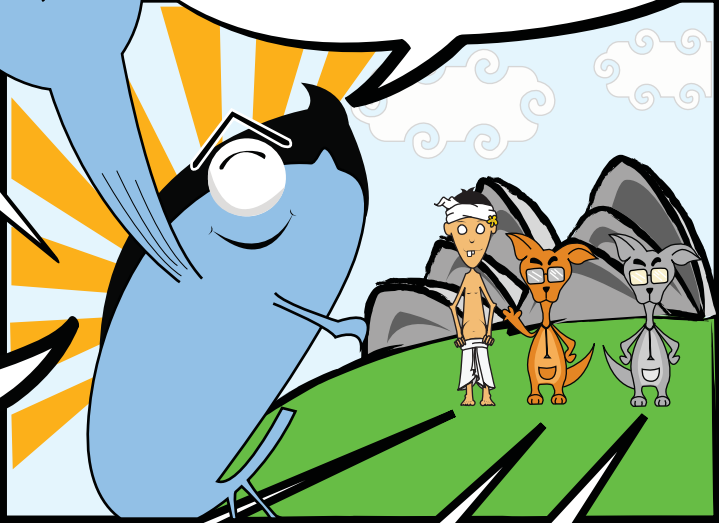


De Comblo is here to represent you and what you have to do when using your Expacare insurance.

I'm the Expacare representative in Jakarta, if you have any medical concerns. You should contact me!

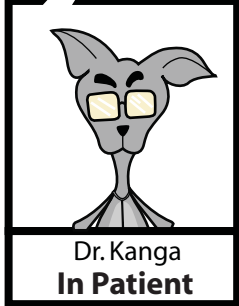
I'll explain the differences of in-patient & out-patient medical procedures but first...



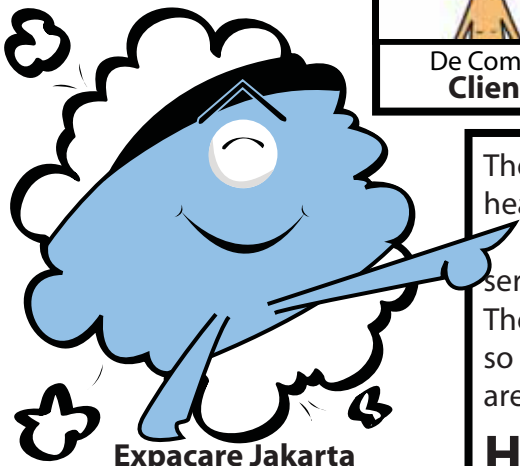
De Comblo
Client



Dr. Roo
Out Patient



Dr. Kanga
In Patient



Expacare Jakarta
+62 21 299 76 300

Email : expacare@global-assistance.net

The Kangaroos represents the 2 parts of the health system.
The orange Dr. Roo is for out-patient services.
The grey Dr. kanga is for in-patient services so you don't get confused as procedures are different.

Here we go!

IN-PATIENT

(Pre -authorised)

Treatment for which it is medically necessary for you to stay in hospital overnight or for more than eight hours.

Row 1:

- Panel 1: Combo is shown with a pained expression, clutching his stomach. A speech bubble says "Egghh...".
- Panel 2: Combo looks distressed. A speech bubble says "I have sharp pain in my stomach. I'd better see a doctor...".

Row 2:

- Panel 3: Combo stands outside a door labeled "Dr. Roo". A caption above reads "Combo visits Dr. Roo for diagnostic...".
- Panel 4: Dr. Roo, a large orange creature, examines Combo. Sound effects "Zee... Zeee...", "Grrr...", and "Bummm..." are present.
- Panel 5: Dr. Roo informs Combo. A speech bubble says "You need to have operation for your appendicitis on the 25th".

Row 3:

- Panel 6: Combo is at a red phone booth. A caption reads "Combo needs to inform Expacare Jakarta".
- Panel 7: Combo is on the phone. A speech bubble says "Hello Expacare I'm having an operation on the 25th".
- Panel 8: A small blue character on the phone says "Hello Combo, we will contact the hospital".
- Panel 9: A speech bubble asks "Will I need to pay the hospital?".
- Panel 10: A speech bubble answers "No, we will pre-authorise your payment".
- Panel 11: A speech bubble says "Hello Dr. Kanga, Combo is having an operation with you at your hospital we want to pre-authorise the payment".
- Panel 12: A speech bubble says "OK Expacare I'm waiting for Combo".

Row 4:

- Panel 13: Combo is standing in front of a building labeled "Hospital". A speech bubble says "Here I am on 25th, ready to go to hospital. Expacare said it's already pre-authorized".
- Panel 14: A small grey character is talking to Combo.
- Panel 15: Dr. Kanga, a grey creature, examines Combo. Sound effects "Zee... Zeee...", "Grrr...", and "Bummm..." are present. A caption below reads "Combo has his operation".

Row 5:

- Panel 16: Combo is lying in a hospital bed. A speech bubble says "Wow I feel so much better...!". A caption above reads "Combo recovers in hospital".
- Panel 17: Combo is eating. A speech bubble says "Expacare has pre-authorized the bills, so I don't have to pay". A caption above reads "Combo fills out claim form".
- Panel 18: Combo is standing in front of the hospital. A speech bubble says "That was easy...!". A caption above reads "Combo recovers in hospital".