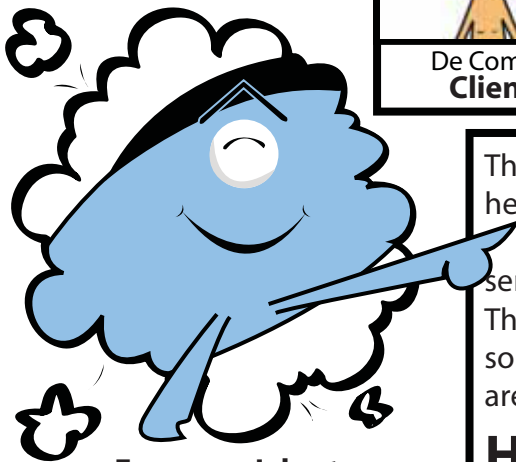
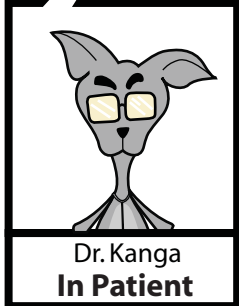
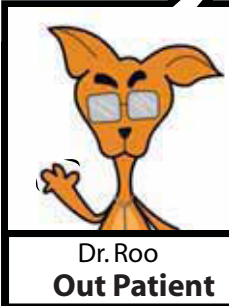
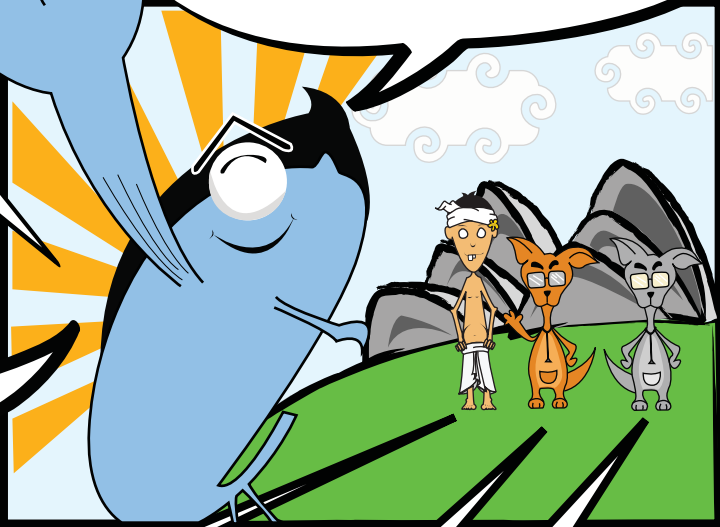


Hi!

De Comblo is here to represent you and what you have to do when using your Expacare insurance.

I'm the Expacare representative in Jakarta, if you have any medical concerns. You should contact me!

I'll explain the differences of in-patient & out-patient medical procedures but first...



The Kangaroos represents the 2 parts of the health system.

The orange Dr. Roo is for out-patient services.

The grey Dr. kanga is for in-patient services so you don't get confused as procedures are different.

Here we go!

Expacare Jakarta
+62 21 299 76 300
Email : expacare@global-assistance.net

EMERGENCY

